

UNITECHO[®]
Technology

致力于高精度·AI人工智能检测
设备研发与技术应用

Committed to the research and development and technical application of high-precision IA artificial intelligence detection equipment

If there is any change in technical data, please contact us without prior notice. If you need more help, please contact us. The final interpretation right of this publication is owned by Unitecho Technology Co.,Ltd.

如有技术资料变更，恕不另行通知如需要更多帮助，请联系我们。本刊物最终解释权归岳一科技有限公司所有。



Unitecho®
最新版微信刊物



全国统一服务热线:

400-8898-777



目录导读

Contents

01-01 | 标志释义 Mark interpretation

简介 about us

- 02-02 | 关于Unitecho 岳一® About Unitecho®
- 03-04 | 发展历程 Development course
- 05-05 | 品牌文化 Brand culture
- 06-06 | 重点服务领域 Key service areas
- 07-10 | 岳一研发中心 Research and Development Center
- 11-12 | 荣誉与专利 Honor and Patent

产品 Products

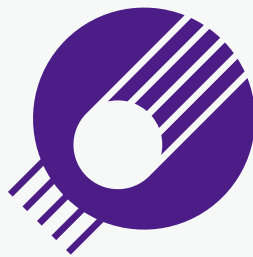
- 13-13 | 六面外观分选设备 Six-sided appearance sorting equipment
- 14-14 | 产品参数表 Product parameter table
- 15-16 | 产品系统构成 Product system composition
- 17-17 | 产品性能 Product performance
- 18-20 | 产品优势 Product advantage
- 21-21 | UIDI深度学习开放平台 UIDI Deep Learning Open Platform
- 22-23 | AI检测及模型训练流程 AI detection and model training process
- 24-24 | 便捷的操作方式 Convenient operation mode
- 25-28 | 缺陷检测案例 Defect detection cases

服务 Services

- 29-29 | 营销服务网点信息 Marketing Service Network Information

致力于高精度·AI人工智能检测 设备研发与技术应用

Committed to the research and development and technical application of high-precision IA artificial intelligence detection equipment



UNITECHO[®]
Technology

标志释义

标志创作灵感来源老子的《道德经》第四十二章，“道生一，一生二，二生……。”借助巧妙的抽象造型手法，将汉字“一”呈现为一道光束，在星球之间照射、传递、指引，完美诠释一个科技型品牌公司——岳一；在科技领域的深入探索与创新力，以及岳一团队的凝聚力，标志整体又形似一颗芯片，高度契合了岳一公司的核心发展方向：AI人工智能、芯片核心算法、高精度光学检测等技术应用特征，标志的倾斜构图，焕发出勃勃生机，一种动态生命力将指引岳一公司迈向更加辉煌的未来。

岳一科技旗下全资控股：

Wholly owned by Unitecho Technology

- | | |
|--------------|--|
| 上海岳展精密科技有限公司 | Shanghai UAZCN Precision Technology Co., Ltd |
| 上海岳视软件有限公司 | Shanghai Yueshi Software Co., Ltd |
| 岳展科技(东莞)有限公司 | Yuezhan Technology (Dongguan) Co., Ltd. |
| 岳展科技(昆山)有限公司 | Yuezhan Technology (Kunshan) Co., Ltd. |
| 岳展科技(太仓)有限公司 | Yuezhan Technology (Taicang) Co., Ltd. |



公司介绍

岳一科技有限公司是一家专注于元器件（MLCC、LTCC、一体电感、NR 电感、贴片电阻、半导体制冷片、芯片等）六面外观瑕疵检测智能装备的研发、生产、销售与服务一体的新型高新技术企业。

公司成立于 2013 年，分别在上海、苏州、东莞、温州、宁波、太仓、芜湖拥有分公司。

公司主要生产应用于电子行业的被动元件尺寸和外观缺陷检测，帮助客户实现生产线的半自动化和全自动化，提高生产效率和产品的良品率。面向客户主要为世界 500 强企业，为他们提供定制服务更新换代和自动化检测解决方案，使我们在光学影像检测行业拥有大批坚定的客户群体。

About Us

Unitecho Technology Co., Ltd. is a new high-tech enterprise focusing on the research, development, production, sales and service of intelligent equipment for detecting defects on six sides of components (MLCC, LTCC, integrated inductor, NR inductor, patch resistor, semiconductor refrigeration sheet, chip, etc.).

Founded in 2013, the company has branches in Shanghai, Suzhou, Dongyi, Wenzhou, Ningbo, Taicang and Anhui.

The company mainly produces performance tests of electronic products used in the electronic industry, helping customers to realize semi-automation and full automation of production lines, and improving production efficiency and product yield. Our customers are mainly Fortune 500 companies, providing them with customized service upgrading and automatic inspection solutions, so that we have a large number of firm customer groups in the optical image inspection industry.



UNITECHO®
岳一科技

发展历程

Development course

2014 自主研发岳一第一代光学影像筛选机，前瞻性的构建生产体系；

In 2014, we independently developed Unitecho's first generation optical image screening machine and built a forward-looking production system;

2016 国内首台 360°连续式检测设备推向市场；

In 2016, the first 360 continuous testing equipment in China was introduced to the market;

2014

2016

2013

2015

2017

2013 年创立于上海，成为一家专业提供视觉在线检测解决方案的商家；

Founded in Shanghai in 2013, it has become a professional provider of visual online detection solutions;

2015 依靠口碑与真诚的服务，年销百台以上，迅速进入行业细分领域第一阵营；

In 2015, relying on word of mouth and sincere service, it sold more than 100 units annually and quickly entered the first camp in the industry segment;

2017 苏州汾湖智能工厂项目土地获批准启动 / 取得上海市“高新技术企业证书”；

In 2017, the land of Suzhou Fenuhu Smart Factory Project was approved to start/obtain the Shanghai High-tech Enterprise Certificate;



2018 成为国家检测项目战略合作伙伴 / 与多家光学检测领先企业达成战略联盟 ;

In 2018, it became a strategic partner of the national testing project/reached a strategic alliance with a number of leading optical testing enterprises;

2020 强化内部管理, 优化生产流程, 最大化客户服务满意度 ; 昆山分公司, 东莞分公司, 台湾分公司成立 ;

2020 Strengthen internal management, optimize production processes and maximize customer service satisfaction; Kunshan Branch, Dongguan Branch and Taiwan Branch were established;

2022 自主研发搭建 AI 行业数据库, 各种经典算法均有相关的自研工业预训练模型, 减少模型迭代周期 ;

2022 independently developed and built an AI industry database, and various classic algorithms have related self-developed industrial pre-training models to reduce the iteration cycle of the model;

2018

2019

2020

2021

2022

2023

2019 苏州汾湖智能工厂投入运行 / 旗下高端品牌“岳一”发布, 加快全球布局: 泰国, 印尼, 韩国, 日本 ;

2019 Suzhou Wuhu Smart Factory was put into operation/its high-end brand "Unitecho" was released to accelerate the global layout: Thailand, Indonesia, South Korea, Japan;

2021 成立 3C 半导体六面检测设备研究院, 自主研发 AI 软件平台上线 ;

六面外观检测设备筛选速度突破 10000pcs/min;

In 2021, the 3C Semiconductor Six-sided Testing Equipment Research Institute was established, and the AI software platform was independently developed and launched;

The screening speed of six-sided appearance inspection equipment exceeded 10000pcs/min;

2023 增设安徽芜湖、越南分公司。

In 2023, Anhui Wuhu and Vietnam branches were added.

Since 2013

十年磨一剑

岳一 2023 迈入高质量发展

公司愿景 /Company Vision:

为世界装上科技的眼睛，让中国制造成为世界的骄傲

Put the eyes of science and technology on the world and make Chinese manufacturing the pride of the world

发展定位 /Development orientation:

AI 人工智能检测 · 高精度 · 高效率

IA Artificial Intelligence Detection High Precision and High Efficiency



重点服务领域

Key service areas



3C 电子行业

主推产品：六面外观光学影像检测；

- 1, MLCC、TLCC;
2. 芯片 / 晶粒、电容、电感；
3. 电子陶瓷类；

国家战略项目

- 1、AI 人工智能检测软件开发应用；
- 2、视觉 3D 检测；
- 3、自主研发的图像算法库；

汽车行业

- 1、高端汽车零部件的尺寸、外观缺陷等检测解决方案；
- 2、汽车零部件安全性能检测解决方案；
- 3、视觉定位引导汽车配件全自动装配解决方案；

其他行业

- 1、医疗滤网、泡罩板、药品、胶囊等在线检测解决方案；
- 2、磁性材料的在线检测解决方案；
- 3、纽扣、回形针、电池后盖的在线检测解决方案；

3C Electronics Industry

Main products: six-sided appearance optical image detection;

- 1, MLCC, TLCC;
2. Chip/grain, capacitor and inductor;
3. Electronic ceramics;

National strategic projects

1. Development and application of AI artificial intelligence detection software;
2. Visual 3D detection;
3. Self-developed image algorithm library;

Automobile industry

1. Inspection solutions for size and appearance defects of high-end auto parts;
2. Safety performance testing solutions for auto parts;
3. Visual positioning guides the automatic assembly solution of auto parts;

Other industries

1. Online detection solutions for medical filters, blister plates, medicines and capsules;
2. On-line detection solution of magnetic materials;
3. On-line detection solution for buttons, paper clips and battery back cover;



走进 岳一科技研发总部

Walk in UNITECHO Technology Suzhou R&D Headquarters



岳一科技研发总部简介

传承岳一智慧，汇聚科技人才，品牌承载梦想！我们应用科技和人才，铸就了产品品质核心竞争力，以创新与服务，为客户创造更高的价值和收益。目前岳一技术团队共取得近 30 多项专利技术、多项软件著作权，我们崇尚科学，反对低效、盲目劳动，我们渴望成功，但从不好高骛远，岳一脚踏实地。其专业能力与技术水平均达到国内领先水平，“高精度，高效率”，Unitecho 岳一与广大客户齐发展，共进步。

Inherit Yue Yi's wisdom, gather scientific and technological talents, and the brand carries dreams! We apply science and technology and talents, cast the core competitiveness of product quality, and create higher value and income for customers with innovation and service. At present, Yue Yi's technical team has obtained nearly 30 patented technologies and many software copyrights. We advocate science and oppose inefficient and blind labor. We are eager for success, but we never drive high and Yue Yi is down-to-earth. Its professional ability and technical level have reached the leading level in China, "high precision and high efficiency", and Unitecho Unitecho has developed and made progress with our customers.



研发总部功能布局概述

Overview of functional layout of R&D headquarters

0F 数据中心

1F 接待中心大厅 市场服务中心

2F 技术、方案演示中心

3F 产品测试 实验室检测中心

4F AI 技术研修学院、客户技术培训中心

0F Data Center

1F Reception Center Hall Market Service Center

2F Technology and Scheme Demonstration Center

3F Product Testing Laboratory Testing Center

4F AI Technology Training Institute,
Customer Technology Training Center



传承岳一智慧，汇聚科技人才，品牌承载梦想！

Inherit Yue Yi's wisdom, gather scientific and technological talents, and the brand carries dreams!



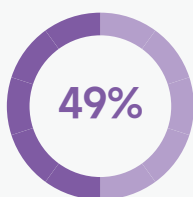
公司一直秉承“以质量求生存、以科技求发展，用创新驱动未来”的经营理念，始终追求卓越产品质量，坚持自主开发软件系统，拥有完善的售后服务体系（东莞、宁波、昆山、太仓、温州、芜湖等均设有独立的办事处及分公司）。我们愿与客户一起面向未来，以品质与服务建立长久的合作友谊，不断为客户创造超越期望的价值。

The company has been adhering to the business philosophy of "survival by quality, development by science and technology, and driving the future by innovation", always pursuing excellent product quality, insisting on independent development of software systems, and having a perfect after-sales service system (Dongwan, Ningbo, Kunshan, Taicang, Wenzhou, Wuhu, etc. have independent offices and branches). We are willing to face the future with our customers, establish long-term cooperation and friendship with quality and service, and constantly create value beyond our expectations for our customers



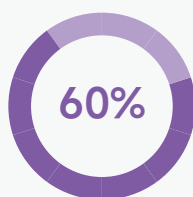
求真务实，可持续发展，充分发挥引领优势。

Seeking truth and being pragmatic, developing sustainably, and giving full play to leading advantages.



技术人才占比

Proportion of technical talents



科研经费占比

Proportion of scientific research funds



累计服务客户

Accumulate customer service



软件著作权

Software Copyright



技术专利

Technical patent

软件著作权

Software Copyright

证书有效期及详情，
请查询岳一官方网站：www.unitcho.com

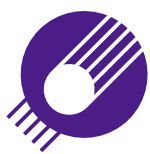


技术专利 Technical patent

证书有效期及详情，
请查询岳一官方网站：www.unitcho.com







UIDI V600系列 六面外观分选设备

UIDI V600 Series Six-sided appearance optical image detection equipment

产品参数表

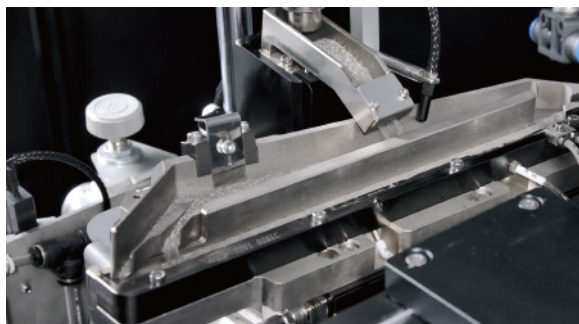
设备通用技术参数							
型号	UIDI V600						
设备尺寸 (长×宽×高)	1000mm×1000mm×1900mm						
整体重量	400kg						
通讯	网口 (支持OPC、WebAPI、TCP/IP、SQL Server等)						
电压	220V/50HZ						
气压	0.5-0.8MPa						
● 设备技术参数表							
检测元件	MLCC						
检测尺寸	英制0201、0402、0603、0805、1206、1210、1812等						
检测项目	电极尺寸、瓷体尺寸、瓷体划伤、破损、瓷体缺损、异色、暗裂纹等						
软件系统	UIDI AI系统、nas平台						
影像解析度	2.3 um pixels/3.45um pixels/4.6 um pixels/6.9 um pixels						
CCD相机模块	德国巴斯勒、STC						
镜头	高清变倍微距镜头						
光源	频闪高亮四射多普光源						
供料机构	高速进口振动盘，使用特殊表面处理，有效避免长时间生产过程中表面产生刮伤						
导料机构	三维高精度导料模组，进口静电吸附装置						
光学玻璃盘	3mm厚高透光性 (>95%)，高精度 (0.01mm)						
DD旋转平台	高精度DD马达 (20位)						
高速电池阀	毫秒级响应，长寿命 (50亿次，终身免维护) 高频率 (1200赫兹)						
出料口	4-6个接料盒 (可根据客户需求选配)						
● 被动元件检测速度							
英制/British measurement		0201	0402	0603	0805	1206	1210
公制/Metric measurement		0603	1005	1608	2012	3216	3225
速度/Speed	L/C	12000	10000	7000	4500	3000	2500
(Pcs/min)	R	7500	7000	4000	3500	2500	1500

UIDI V600系列 六面外观分选设备 系统构成

UIDI V600 Series Six-sided appearance
optical image detection equipment
System composition

高速送料系统 / 高速运动控制模块 / 高速采集模块
/ 高速处理模块 / 高速分选系统 / 实时控制系统

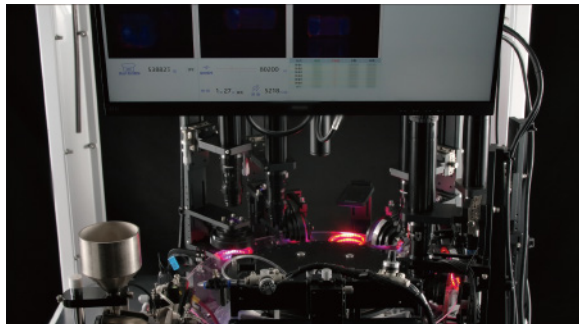
High-speed feeding system/high-speed motion control
module/high-speed acquisition module/high-speed processing
module/high-speed sorting system/real-time control system



高速送料系统 High Speed Feeding System

高速进口振动盘，使用特殊表面处理，有效避免
长时间生产过程中表面产生刮伤。

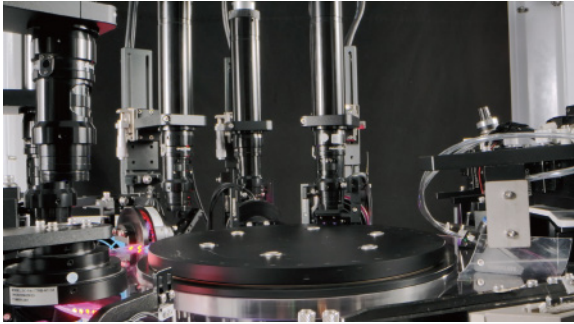
High-speed imported vibrating plate, using
special surface treatment, effectively avoid surface
scratches in the long-term production process.



高速运动控制模块 High Speed Motion Control Module

采用 FPGA+DSP+DSP 芯片的计数，实现高精度
运动控制，保证了高速运转中拍照和吹气位置的准确
性。

Using FPGA + DSP + DSP chip to count,
high-precision motion control is realized, which
ensures the accuracy of photographing and blowing
position in high-speed operation.

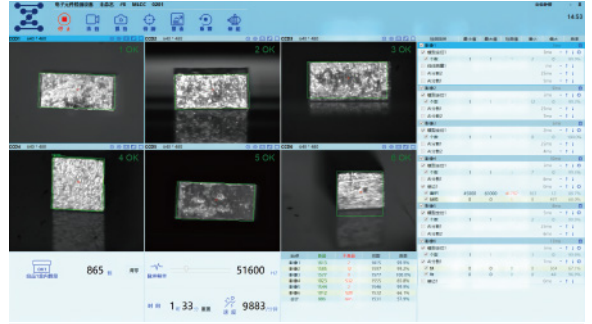


高速采集模块

High Speed Acquisition Module

采用 500+ 高帧率的工业相机，微秒级曝光，将延迟和抖动时间降至最低，保证了高速运转中拍照的清晰度。

The industrial camera with 500 + high frame rate and microsecond exposure is adopted, which minimizes the delay and jitter time and ensures the clarity of taking pictures at high speed.



高速处理模块

High Speed Processing Module

采用循环队列缓存 + 多线程并行处理采集、计算、显示及存储技术，充分利用系统资源，减少峰值波动，保证高速运转的稳定性。

Using circular queue cache + multi-thread parallel processing acquisition, calculation, display and storage technology, make full use of system resources, reduce peak fluctuation and ensure the stability of high-speed operation.

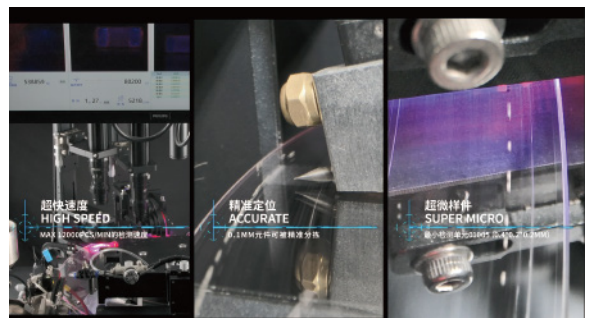


高速分选系统

High-speed sorting system

毫秒级高频率电池阀，确保每颗元件精准无误的吹入对应的收料盒。

Millisecond high frequency battery valve ensures that each component is accurately blown into the corresponding receiving box.



实时控制系统

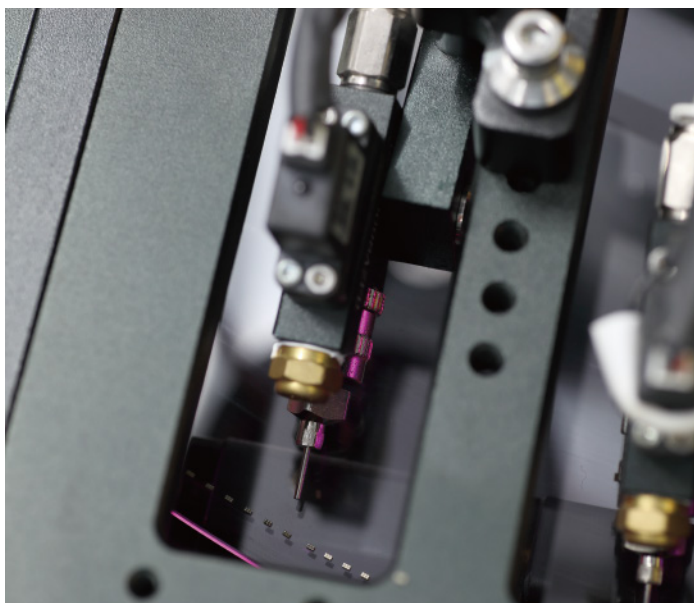
Real-time control system:

实现 80MHz 实时位置跟踪，芯片级定制，比 PLC 和 PC 刷新更快，大幅度提升视觉系统和筛选系统的位置追踪精度。

Realize 80MHz real-time position tracking, chip-level customization, refresh faster than PLC and PC, and greatly improve the position tracking accuracy of vision system and screening system.

产品性能

Product performance



定位精准

Accurate positioning

每一颗高速运动中的元件，通过 20 位高分辨率的 DD 马达实现精准定位。

Every high-speed moving component is accurately positioned by 20-bit high-resolution DD motor.

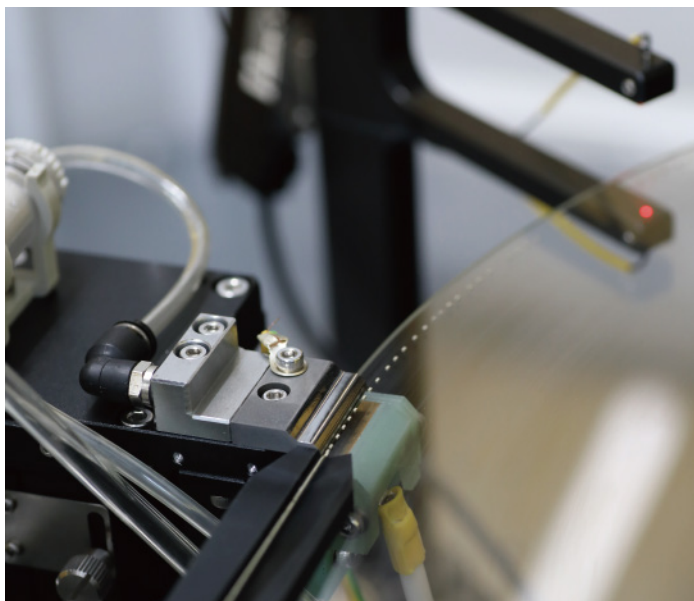


检测精准

Accurate detection

可捕捉传统算法无法检测出的细微缺陷类型，同时还能做到零缺失，高检测率，低误判率。

It can capture subtle defect types that can't be detected by traditional algorithms, and at the same time, it can achieve zero defect, high detection rate and low misjudgment rate.



排料精准

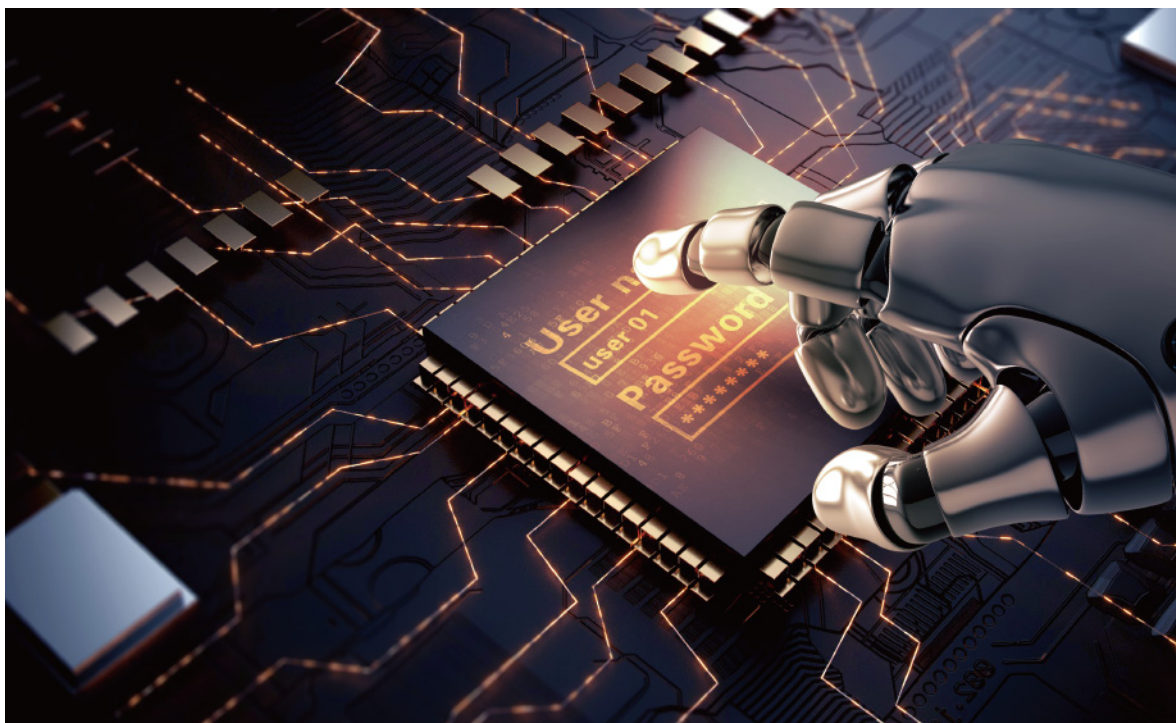
Accurate layout

毫秒级响应，高度可靠的微秒级时间重复性，长寿命（50 亿次，终身免维护）。

millisecond response, highly reliable microsecond time repeatability, long life (5 billion times, maintenance-free for life).

产品优势

Product advantage

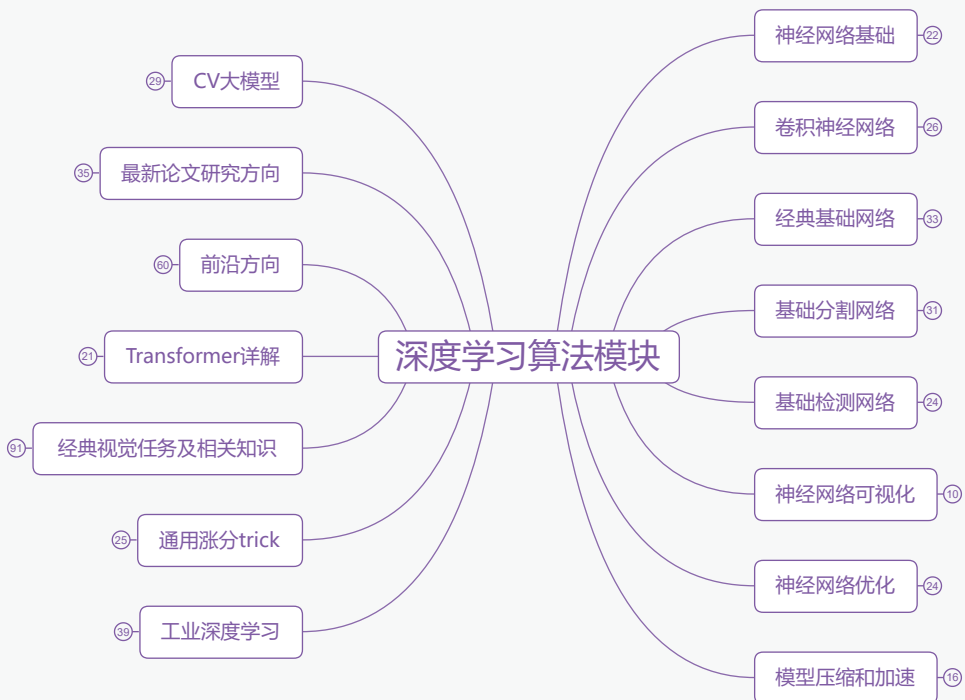


优势一、高适用性

Advantage 1: High applicability

内置大量深度学习算法，适合各种场景检测。

Built-in a large number of deep learning algorithms, suitable for various scene detection.

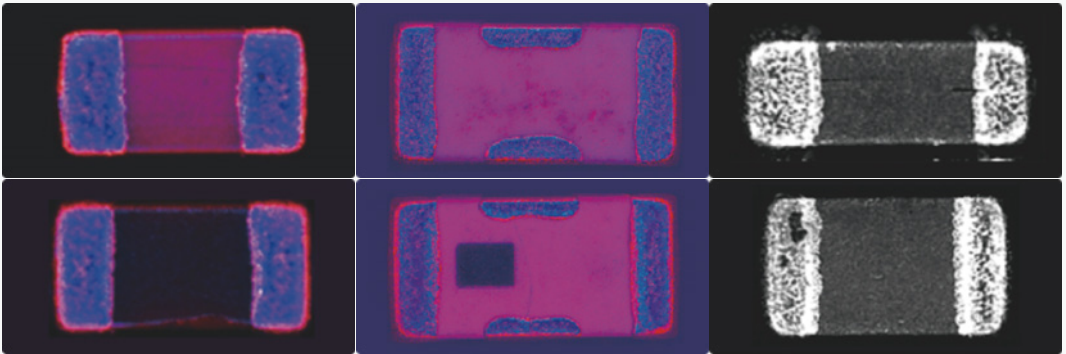


优势二：低训练成本

Advantage 2: Low training cost

已收集大量行业数据，内涵工业 CV 大模型，减少 AI 模型训练迭代周期：

A large number of industry data have been collected, which contains industrial CV large model and reduces the training iteration cycle of AI model:

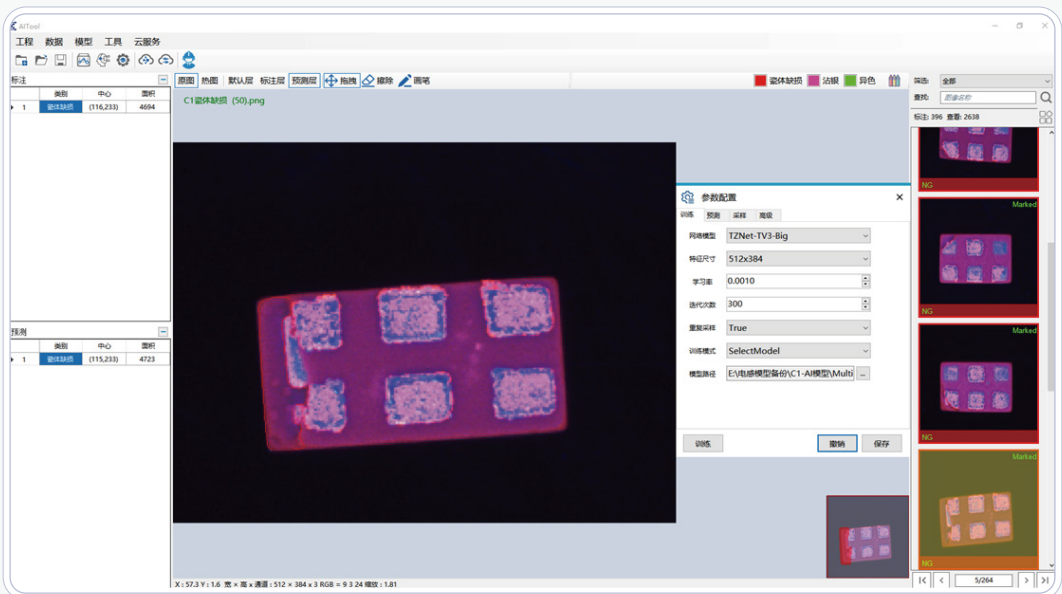


优势三：高便捷性

Advantage 3: High convenience

自研 AI 通用检测平台，无需行业经验，低门槛完成整套 AI 模型从标注到训练到最终模型导出的全套操作。

Self-developed AI general detection platform, without industry experience, completes the whole set of operations of AI model from labeling to training to final model export with low threshold.



优势四：高检测速度

Advantage 4: High detection speed

模型压缩以及综合部署加速，在高速场景下支持六相机节拍 12000 只 /min 以上。

Model compression and integrated deployment acceleration support six camera beats above 12,000/min in high-speed scenes.

岳一AI核心竞争力-速度

1.部署端：所有模型均实现Tensorrt半精度加速，部分模型实现Tensorrt Int8量化，所有非模型端的前处理后处理操作采用CUDA编程。

2.算法端：模型剪枝以及知识蒸馏，目前最小模型参数量1.2M

AI端速度参考表

	单卡 (3080Ti)	双卡 (2*3080Ti)
单相机高精度模型	2000只/min	----
四相机高精度模型	1000只/min	2000只/min
六相机高精度模型	600只/min	1200只/min
单相机高速模型	----	----
四相机高速模型	8000只/min	----
六相机高速模型	6000只/min	12000只/min

*以上速度仅统计深度学习端接受图像到返回结果的整体时间

优势五：高检出率

Advantage 5: High detection rate

针对行业定制研发的深度学习检测算法，适合细小隐裂以及黑崩等行业难点检测。

The deep learning detection algorithm customized for the industry is suitable for the detection of difficult industries such as small cracks and blackouts.

The screenshot displays a software interface for electronic component inspection. It features a top toolbar with icons for stop, capture, zoom, search, report, settings, and help. Below the toolbar are six camera feeds (CCD1-CCD6) showing different views of a component. A central control panel includes a 'Clear' button, a 'Pulse Frequency' slider set to 51600 Hz, and a 'Time' display showing 1:33. A bottom status bar shows '865' items and '11883' defects. On the right side, a detailed data table is visible, listing detection metrics for various items and models.

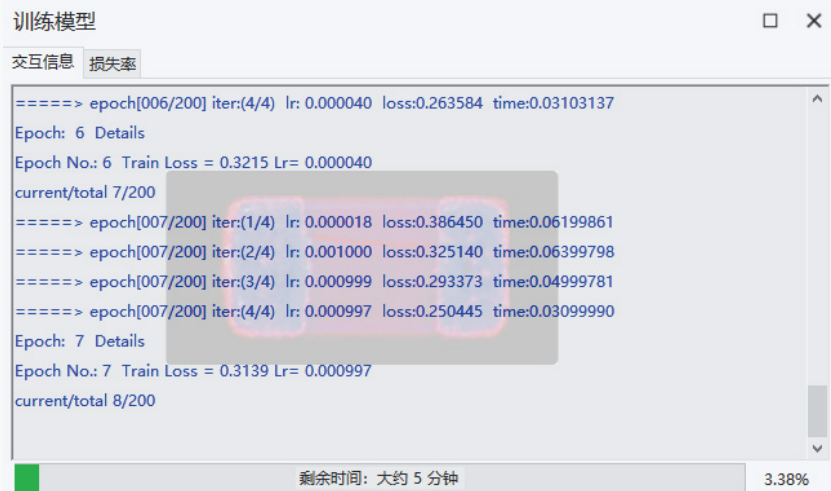
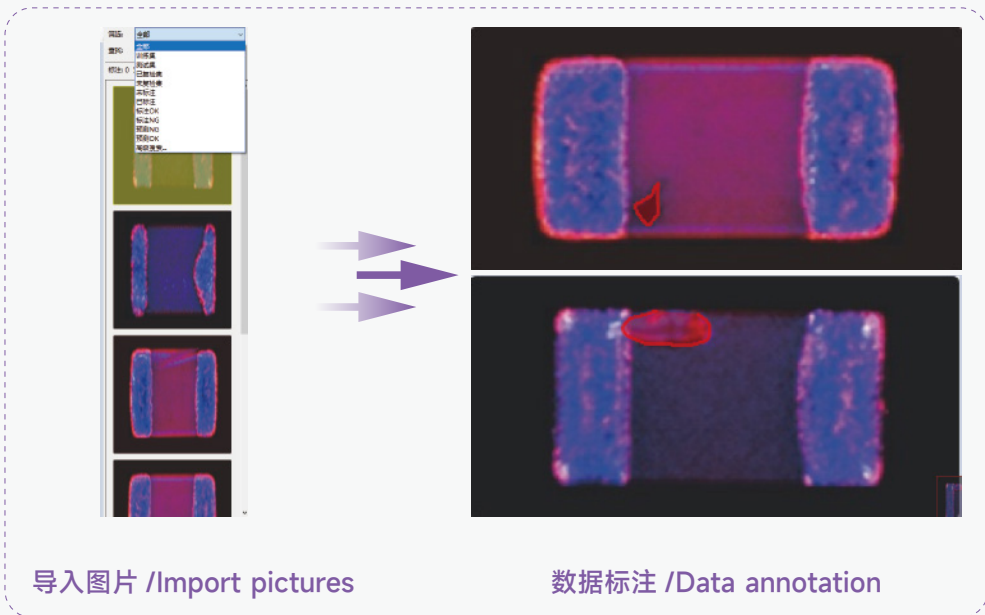
检测项目	最小值	最大值	检测值	最小	最大	合格率
模型位1	1	1	2	0	99.9%	
连续数量1	ms	-	-	-	-	
A分辨率1	25ms	-	-	-	-	
A分辨率2	5ms	-	-	-	-	
模型位1	1	1	12	0	99.2%	
A分辨率1	25ms	-	-	-	-	
A分辨率2	7ms	-	-	-	-	
模型位1	1	1	1	0	100.0%	
A分辨率1	25ms	-	-	-	-	
A分辨率2	4ms	-	-	-	-	
模型位1	1	1	7	0	99.5%	
A分辨率1	6ms	-	-	-	-	
A分辨率2	0ms	-	-	-	-	
面积	45000	63000	41782	163	12	86.7%
缺陷	0	0	1	0	497	68.0%
模型位1	1	1	2	0	99.9%	
A分辨率1	25ms	-	-	-	-	
A分辨率2	6ms	-	-	-	-	
模型位1	1	1	3	0	99.8%	
A分辨率1	7ms	-	-	-	-	
缺陷	0	0	0	0	504	67.1%
缺陷	0	0	0	0	48	96.9%
面积1	0ms	-	-	-	-	

UIDI深度学习开放平台

American Industrial Development Agency Deep Learning Open Platform

基于日常生产中所采集到的图片，采用当前最新的 ChatGPT 训练手法 - 人类反馈强化学习（RLHF）开发了岳一品牌的 UIDI 深度学习开放平台，方便客户按照自己需求进行缺陷标准迭代优化。

Based on the pictures collected in daily production, the UIDI deep learning room opening platform of Unitecho brand is developed by using the latest ChatGPT training technique-Human Feedback Reinforcement Learning (RLHF), which is convenient for customers to iteratively optimize defect standards according to their own needs.



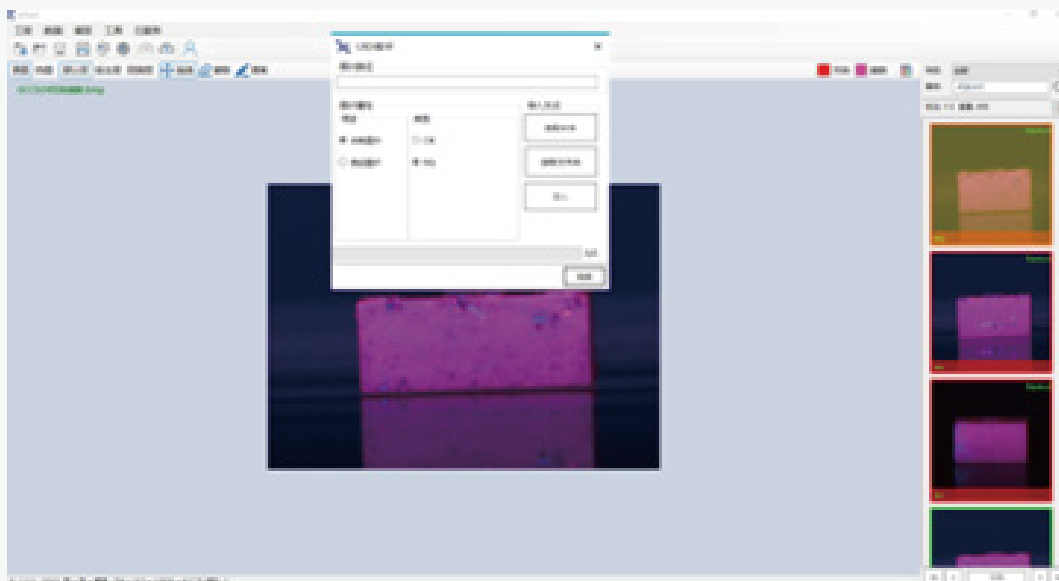
模型训练 / Model training

AI检测及模型训练流程

AI detection and model training process

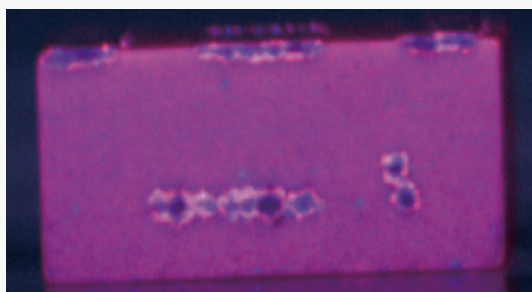
第一步：相机采集样本图片，并导入到平台中：

Step 1: The camera collects sample pictures and imports them into the platform:



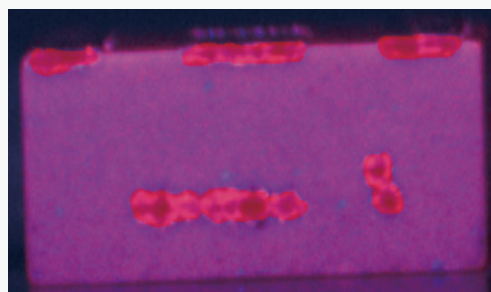
第二步：放大图像，针对缺陷区域进行人工标注

Step 2: Enlarge the image and manually mark the defect area



原图

Original picture



标注后

After labeling of picture

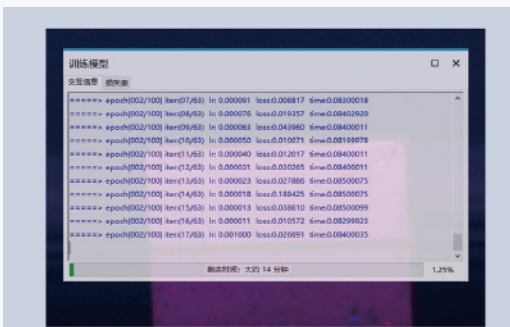
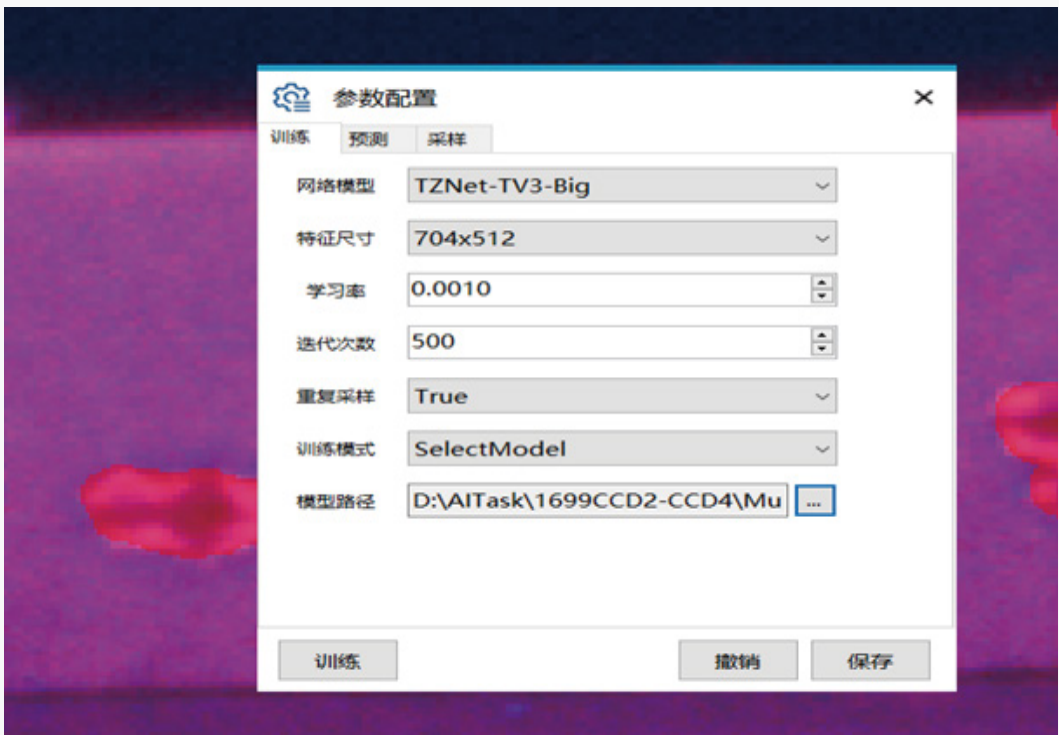
人工标注操作指通过画笔操作的是人为的告诉计算机什么是缺陷，让计算机以此作为监督标签进行后续的 AI 算法学习。

Manual labeling operation refers to the operation of brushes to artificially tell the computer what defects are, and let the computer use them as supervisory tags for subsequent AI algorithm learning.



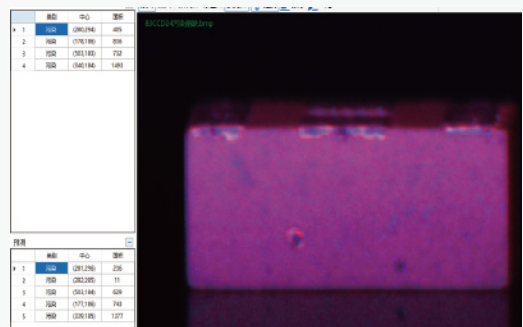
第三步：根据不同图像大小以及缺陷大小，配置训练参数，选取相应型号的预训练模型。

Step 3: According to different image sizes and defect sizes, configure training parameters and select corresponding pre-training models



第四步：模型训练

Step 4: Model training

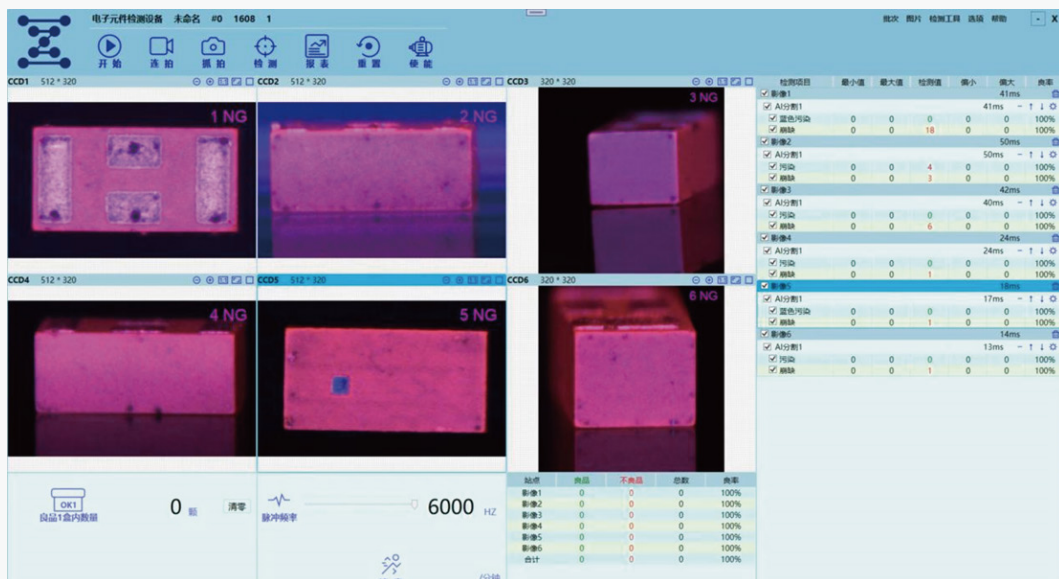


第五步：模型效果验证：

Step 5: Model effect verification:

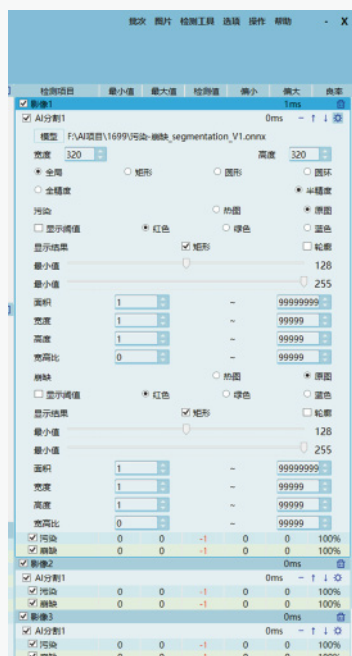
便捷的操作方式

Convenient operation mode



1、将运动控制操作集成到视觉检测软件，只需操作一个界面。

1. The motion control operation is integrated into the visual inspection software, which only needs to operate one interface



2、界面图表化，显示更为直观。

2. The interface is graphical and the display is more intuitive.

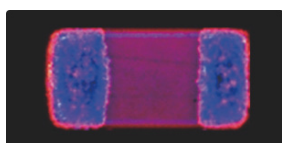


3、二级操作界面，简洁高效。

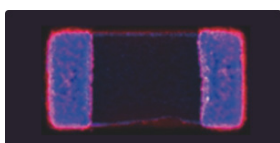
3. The secondary operation interface is simple and efficient.

MLCC 缺陷检测案例

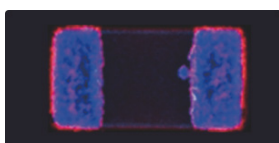
MLCC Defect Detection Case



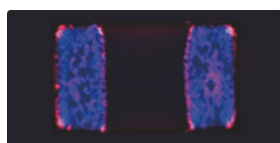
瓷体划伤
Scratch of porcelain body



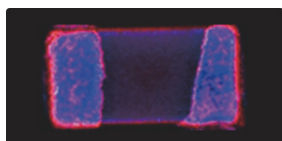
瓷体缺损
Defect of porcelain body



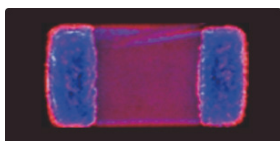
瓷体染锡
Tin dyeing on porcelain



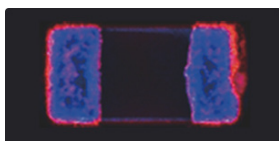
瓷体污损
Porcelain fouling



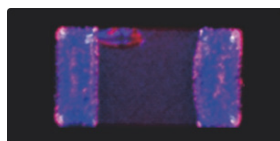
电镀蔓延
Plating spread



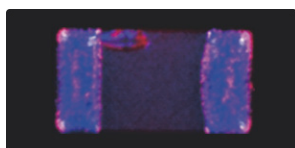
电镀溢出
Plating overflow



电极破损
Electrode breakage



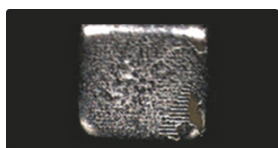
端电极破损
The terminal electrode is damaged



端电极缺损
Terminal electrode defect



端头划伤
End scratches



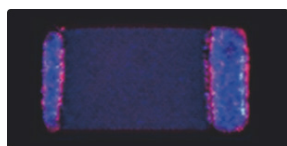
端头漏铜
Copper leakage at end



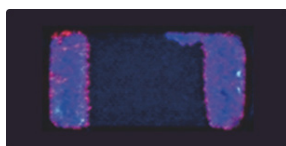
端头缺损
End defect



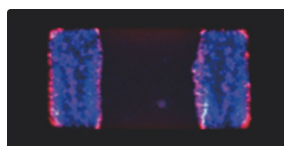
端头异色
Heterochromatic end



裂纹
Cracks



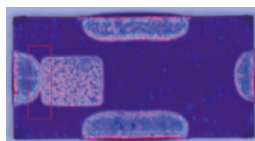
染锡
Tin dyeing



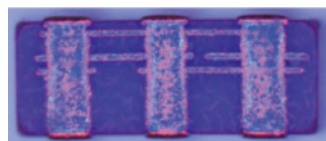
陶瓷体缺损
Ceramic body defect

LTCC 缺陷检测案例

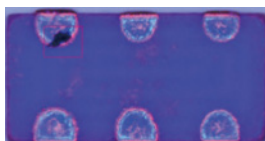
LTCC Defect Detection Case



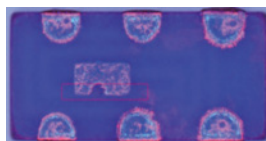
连锡
Even kiss



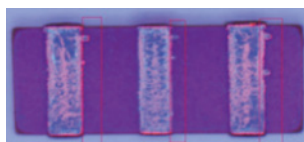
侧面连锡
Lateral kiss



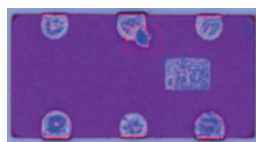
电极气泡 / 异物
Electrode bubbles/
foreign matter



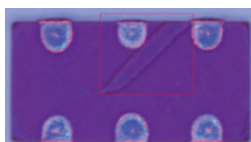
电极缺损
Electrode defect



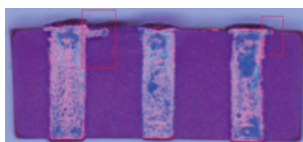
多银
Silver-rich



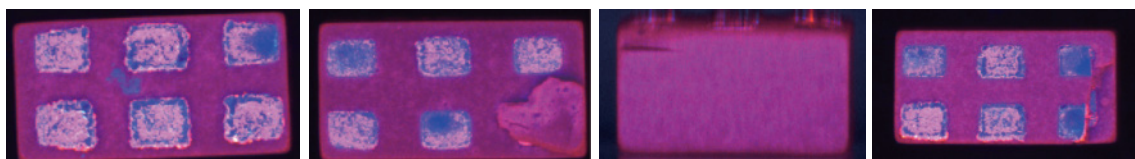
银点、毛边
Silver dots, burrs



多料
Multiple materials



电极毛边
Electrode burr

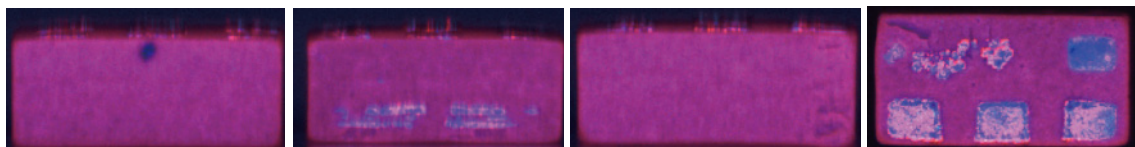


铺银
Bureau silver

缺银
Silver deficiency

侧面裂纹
Side crack

磁体缺损
Magnet defect



异色
Heterochromatic

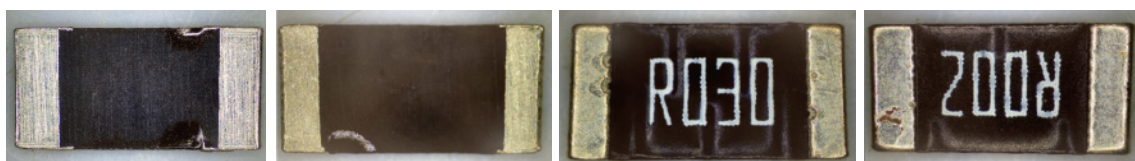
侧面漏电极
Side drain electrode

凹痕
Ddent

电极缺失
Electrode deletion

贴片电阻缺陷检测案例

Inspection case of patch resistance defect

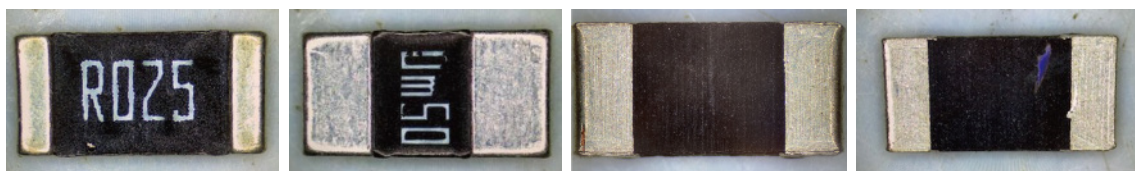


破漆
Broken paint

油墨不足
Ink shortage

导体-蚀孔
Conductor-etching hole

导体-脏污
Conductor-dirt



破漆
Broken paint

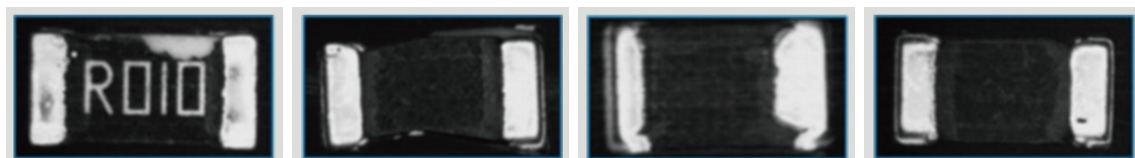
字体异常
Font exception

导体-R脏污
Conductor-R dirt

本体异色
Ontological heterochromatism

电阻缺陷检测案例

Case of resistance defect detection

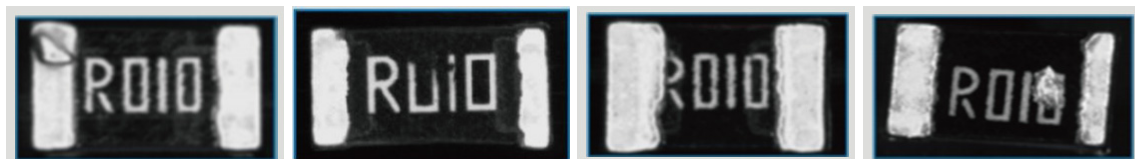


崩缺
Collapse

变形
Deformation

大小电极
Large and small
electrical levels

电极缺失
Loss of electrical level

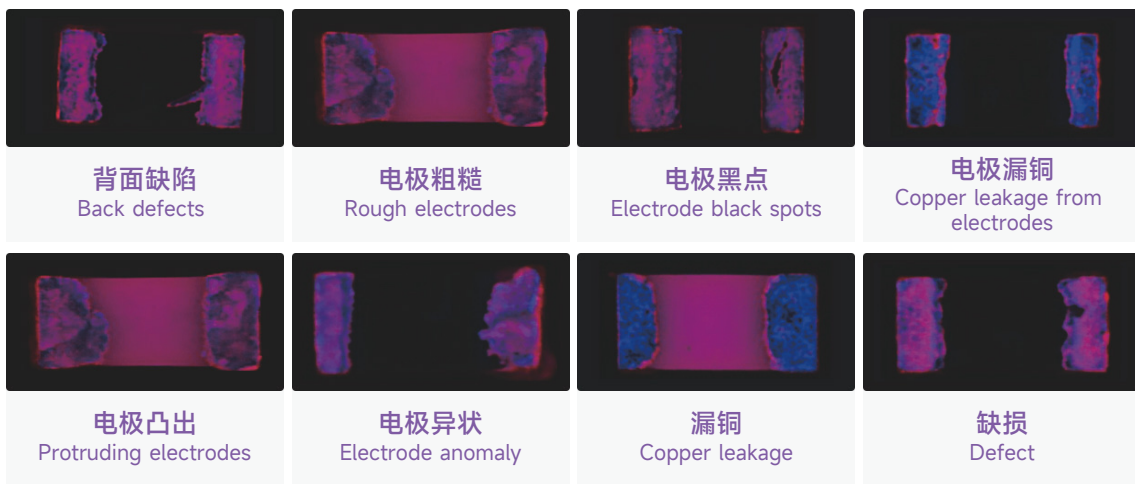


镀层凸起
Plating bulges

断线
Disconnect

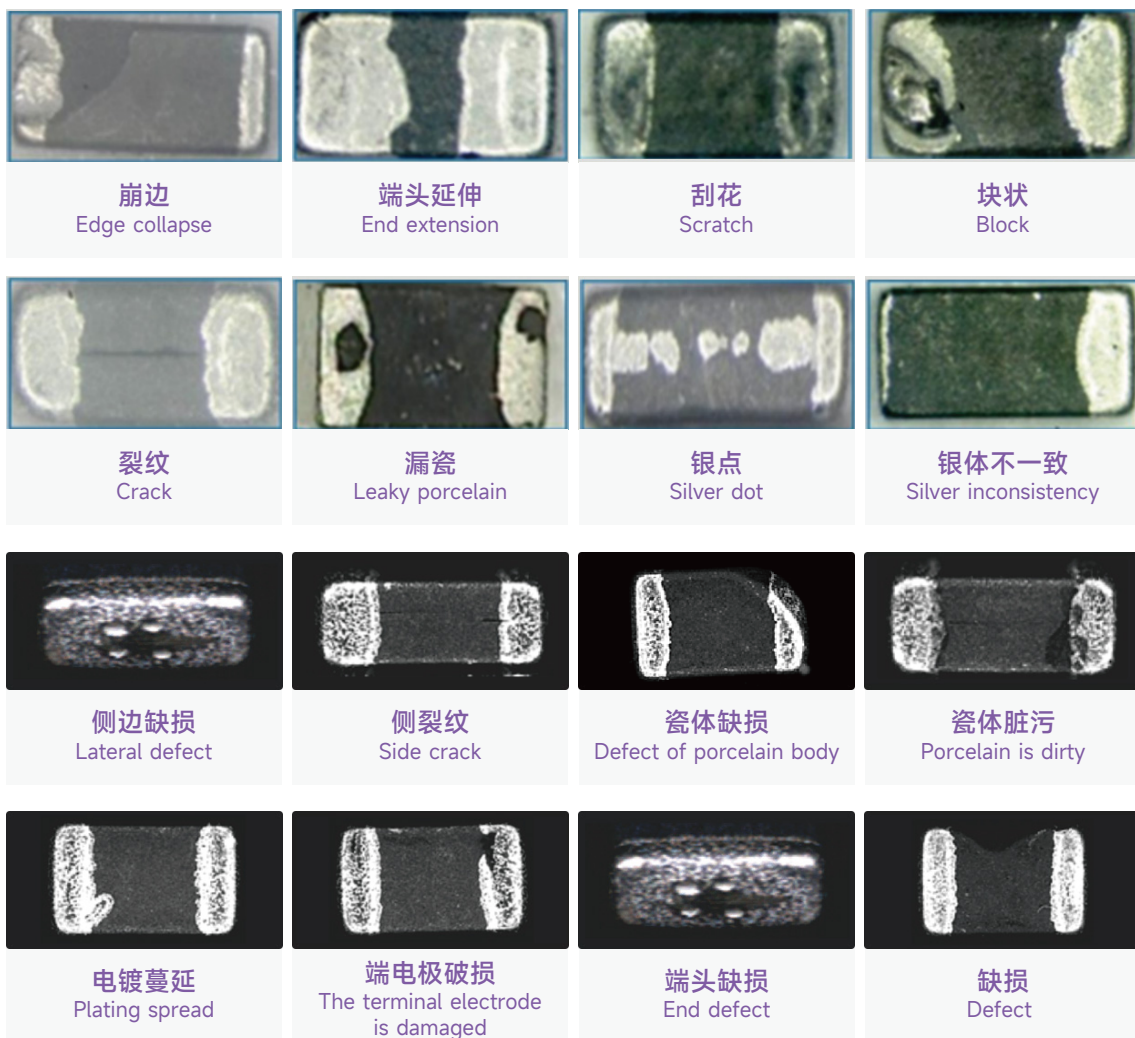
盖标记
Cover the mark

字符挂锡
Characters are hung
with tin



电容、电感缺陷检测案例

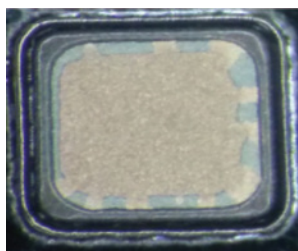
Case of Capacitance and Inductance Defect Detection



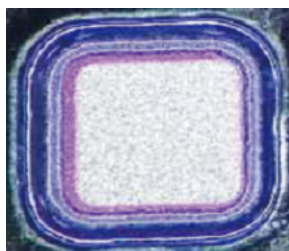
芯片缺陷检测案例

Chip defect detection case

> 转下页 / next page



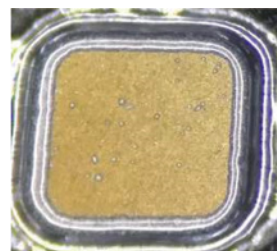
氧化膜锯齿形、缺损
The oxide film is defective



氧化膜偏位
Oxide film bias



毛边、尖角残留
Rough edges and sharp corners remain



玻璃点
Glass spot



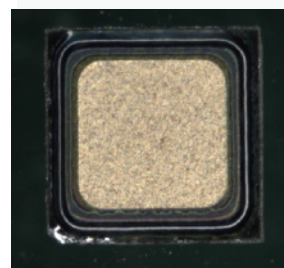
芯片破损
Chip breakage



芯片破裂
Chip rupture



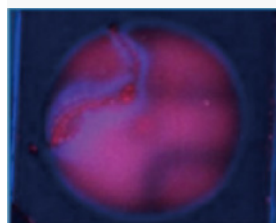
裂片不良
Bad lobes



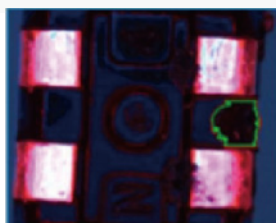
玻璃线破
Glass thread breakage

LED 缺陷检测案例

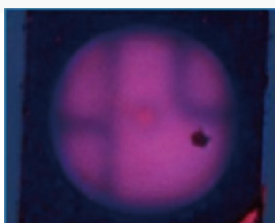
Case of LED Defect Detection



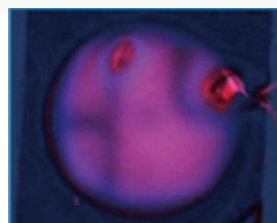
不平整
Unevenness



管脚胶物
Pin glue



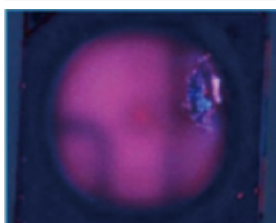
胶面黑点
Black spots on glue surface



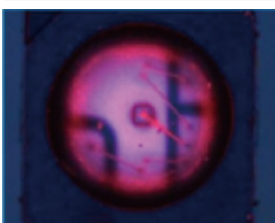
胶面拉丝
Rubber surface drawing



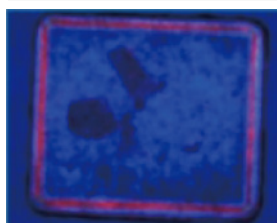
胶面异物
Foreign bodies on the glue surface



胶物白点
Glue white spots



漏点胶
Leak some glue



黏胶
Glue

磁环缺陷检测案例

Case of magnetic ring defect detection



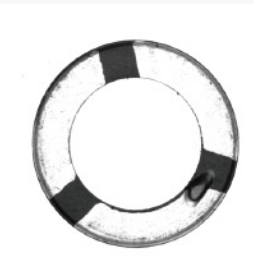
割裂
Split



破损
Damage



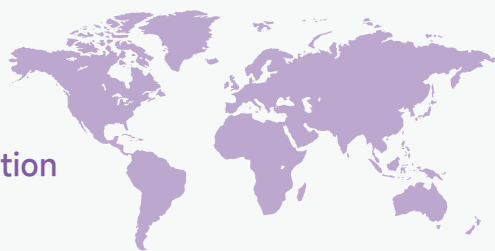
粘膜
Mucosa



凹陷
Depression

营销服务网点信息

Marketing Service Network Information



岳一科技（总公司）

电话 :0512-6326 8777

手机 :159-0216-9777

地址 : 江苏省苏州市吴江区汾湖高新区灵猴路 5 号

邮箱 :uidi@unitecho.com

网站 :www.unitecho.com

全国服务热线 :400-8898-777

Unitecho Technology (Head Office)

Tel: 0512-6326 8777

Mobile: 159-0216-9777

Address: No.5 Linghou Road, Fenhu High-tech Zone, Wujiang District, Suzhou City, Jiangsu Province

E-mail: uidi@unitecho.com

Http://www.unitecho.com

National Service Hotline: 400-8898-777

广东东莞公司

联系人 : 岳先生

电话 :188-0218-6388

邮箱 :yuezhan@unitecho.com

地址 : 广东省东莞市常平镇常朗路 160 号

Guangdong Dongguan company

Contact person: Mr. Yue

Tel: 188-0218-6388

E-mail: yuezhan@unitecho.com

Address: No.160 Changlang Road, Changping Town, Dongguan City, Guangdong Province

浙江宁波公司

联系人 : 杨浩

电话 :138-1864-9861

邮箱 :edison@unitecho.com

地址 : 浙江省宁波市慈溪市周巷镇周西公路 165 号 3 号楼

Zhejiang Ningbo company

Contact person: Yang Hao

Tel: 138-1864-9861

E-mail: edison@unitecho.com

Address: Building 3, No.165 Zhouxi Highway, Zhouxiang Town, Cixi City, Ningbo City, Zhejiang Province

苏州昆山公司

联系人 : 胡芮

电话 :136-7184-5679

邮箱 :Mia@unitecho.com

地址 : 江苏省昆山市淀山湖镇新兴路 10 号

Suzhou Kunshan Company

Contact person: Hu Rui

Tel: 136-7184-5679

Email: Mia@unitecho.com

Address: No.10 Xinxing Road, Dianshanhu Town, Kunshan City, Jiangsu Province

江苏太仓公司

联系人 : 王华亮

电话 :150-5143-0968

邮箱 :wanghualiang@unitecho.com

地址 : 江苏省太仓市双凤镇凤南路 32 号

Jiangsu Taicang Company

Contact person: Wang Hualiang

Tel: 150-5143-0968

E-mail: wanghualiang@unitecho.com

Address: No.32 Fengnan Road, Shuangfeng Town, Taicang City, Jiangsu Province

安徽芜湖公司

联系人 : 赵旭

电话 :186-6857-8665

邮箱 :zhaoxu@unitecho.com

地址 : 安徽省芜湖市湾沚区工业大道 2388 号 01 栋

Anhui Wuhu company

Contact person: Zhao Xu

Tel: 186-6857-8665

Email: zhaoxu@unitecho.com

Address: Building 01, No.2388 Gongye Avenue, Wan Jiao District, Wuhu City, Anhui Province

浙江温州公司

联系人 : 李江钱

电话 :139-6822-5351

邮箱 :lijiangqian@unitecho.com

地址 : 浙江省温州市龙湾区滨海工业园区

Zhejiang Wenzhou company

Contact person: Li Jiangqian

Tel: 139-6822-5351

E-mail: lijiangqian@unitecho.com

Address: Binhai Industrial Park, Longwan District, Wenzhou City, Zhejiang Province



高精度·AI人工智能检测
设备研发与技术应用
www.unitecho.com



UNITECHO[®]
岳一科技

岳一科技有限公司

地址：江苏·苏州市汾湖高新区灵猴路5号

全国统一服务热线：400-8898-777

E-mail: Uidi@unitecho.com

[Http://www.unitecho.com](http://www.unitecho.com)

Unitecho Technology Co., Ltd.

Add: No.5 Linghou Road, Fenhu High-tech Zone,
Suzhou City, Jiangsu Province

National Unified Service Hotline:400-8898-777

E-mail: Uidi@unitecho.com

[Http://www.unitecho.com](http://www.unitecho.com)

